



COMPASS

Queens Luxury Report

Jan 05 - 11, 2025, Residential Contracts \$1.25M+

Photo: 21-10 44th Drive, Unit PHA

The Queens luxury real estate market, defined as all properties priced \$1.25M and above, saw 9 contracts signed this week, made up of 9 houses. The previous week saw 7 deals. For more information or data, please reach out to a Compass agent.

\$1,506,667

Average Asking Price

\$1,353,000

Median Asking Price

\$705

Average PPSF

0%

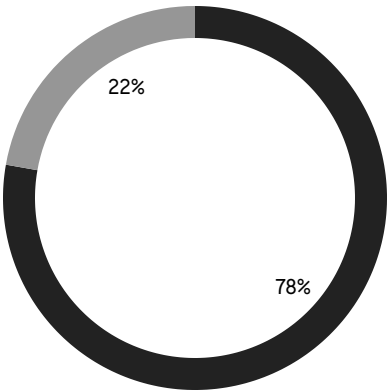
Average Discount

\$13,560,000

Total Volume

74

Average Days On Market



■ NORTHEASTERN QUEENS
■ CENTRAL QUEENS

0

Condo Deal(s)

0

Co-op Deal(s)

9

Single-Family Deal(s)

\$0

Average Asking Price

\$0

Average Asking Price

\$1,506,667

Average Asking Price

\$0

Median Asking Price

\$0

Median Asking Price

\$1,353,000

Median Asking Price

\$0

Average PPSF

\$705

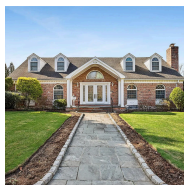
Average PPSF

0

Average SqFt

2,254

Average SqFt



104 Grosvenor Street

Douglaston

Contract Signed

Type	House	Price	\$2,080,000	Sq. Ft.	3,371	Beds	4
DOM	65	Initial	\$1,999,000	PPSF	\$618	Baths	3

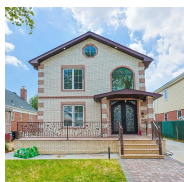


1463 Burton Street

Whitestone

Contract Signed

Type	House	Price	\$1,988,000	Sq. Ft.	2,070	Beds	4
DOM	61	Initial	\$1,988,000	PPSF	\$961	Baths	2



83-46 248th Street

Bellerose

Contract Signed

Type	House	Price	\$1,455,000	Sq. Ft.	2,250	Beds	4
DOM	167	Initial	\$1,530,000	PPSF	\$647	Baths	4

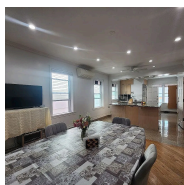


160-31 24th Avenue

Flushing

Contract Signed

Type	House	Price	\$1,388,000	Sq. Ft.	1,865	Beds	3
DOM	66	Initial	\$1,388,000	PPSF	\$745	Baths	2



6329 Dry Harbor Road

Middle Village

Contract Signed

Type	House	Price	\$1,353,000	Sq. Ft.	-	Beds	-
DOM	124	Initial	\$1,453,000	PPSF	-	Baths	-



324 Beverley Road

Douglaston

Contract Signed

Type	House	Price	\$1,350,000	Sq. Ft.	2,642	Beds	4
DOM	50	Initial	\$1,350,000	PPSF	\$511	Baths	2

Compass is a licensed real estate broker and abides by Equal Housing Opportunity laws. All material presented herein is intended for informational purposes only. Information is compiled from sources deemed reliable but is subject to errors, omissions, changes in price, condition, sale, or withdrawal without notice. No statement is made as to the accuracy of any description. All measurements and square footages are approximate. This is not intended to solicit property already listed. Nothing herein shall be construed as legal, accounting or other professional advice outside the realm of real estate brokerage.



99-64 65th Avenue
Rego Park

Contract Signed

Type	House	Price	\$1,349,000	Sq. Ft.	1,400	Beds	3
DOM	38	Initial	\$1,349,000	PPSF	\$964	Baths	2



40-25 221st Street
Bayside

Contract Signed

Type	House	Price	\$1,299,000	Sq. Ft.	2,504	Beds	5
DOM	37	Initial	\$1,299,000	PPSF	\$519	Baths	3



16-07 201st Street
Clearview

Contract Signed

Type	House	Price	\$1,298,000	Sq. Ft.	1,924	Beds	3
DOM	50	Initial	\$1,298,000	PPSF	\$675	Baths	2

Compass is a licensed real estate broker and abides by Equal Housing Opportunity laws. All material presented herein is intended for informational purposes only. Information is compiled from sources deemed reliable but is subject to errors, omissions, changes in price, condition, sale, or withdrawal without notice. No statement is made as to the accuracy of any description. All measurements and square footages are approximate. This is not intended to solicit property already listed. Nothing herein shall be construed as legal, accounting or other professional advice outside the realm of real estate brokerage.